

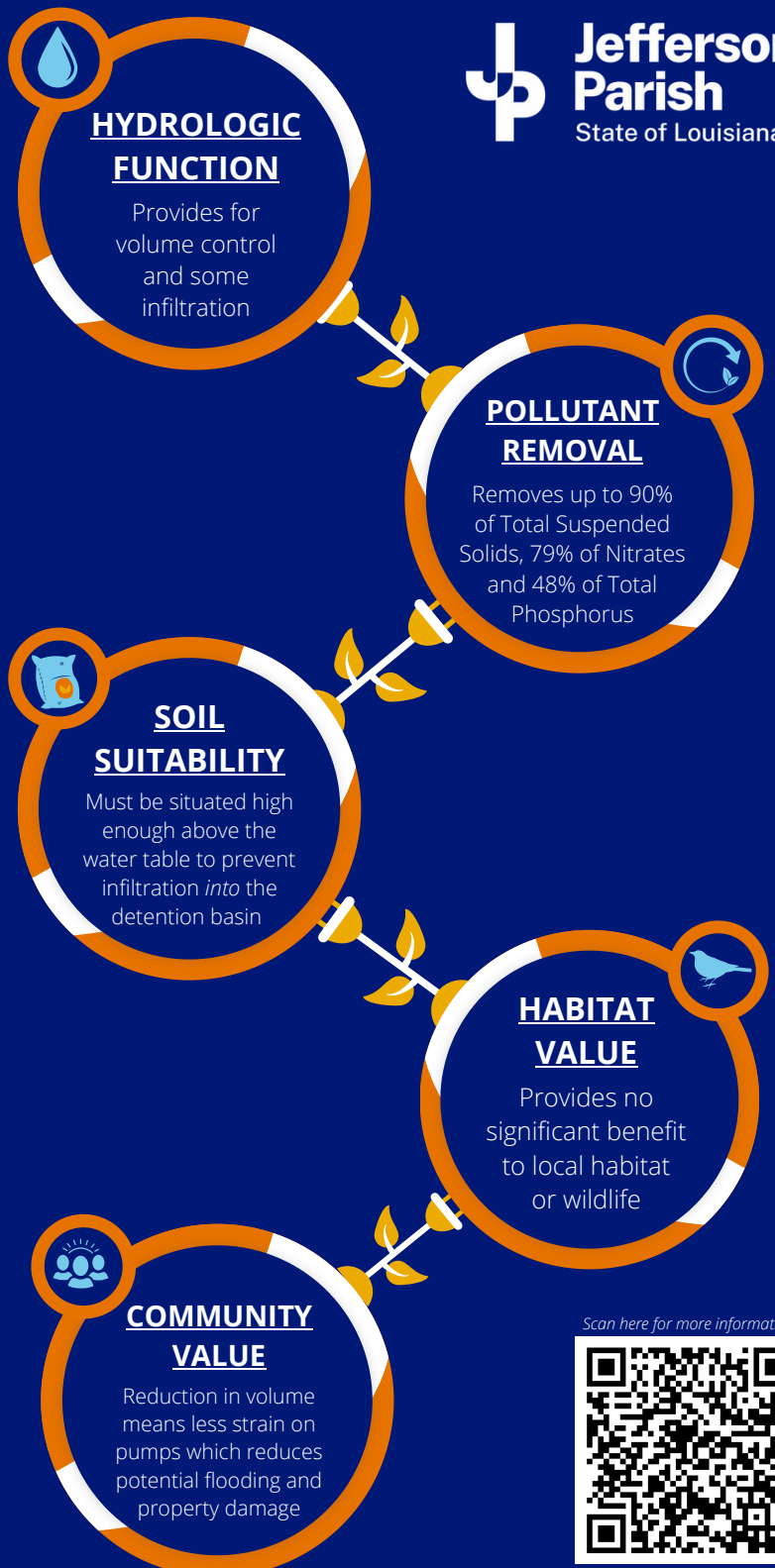
DETENTION BASINS FACT SHEET

Detention Basins are facilities intended to provide temporary storage and release of stormwater runoff to mimic predevelopment runoff characteristics. Unlike Retention Basins, Detention Basins are designed to fully drain after a rain event. Detention Basins may be in the form of above ground open facilities or subsurface vaults or tanks that may or may not also promote infiltration.

Detention Basins can be applied at street, neighborhood and even regional scales when physical space is available. If space is constrained, the detention basin can be placed below ground provided the water table is low enough to accommodate such use.



Innovative Above Ground Detention Area in Retrofitted New Orleans Stormwater Lot; source: Louisiana.gov



Scan here for more information

